

Philippe Vermeulen<sup>1</sup>, Janice Lofthouse<sup>2</sup>, Paul Brereton<sup>2</sup>, Joel Smith<sup>2</sup>, Olga Kehagia<sup>3</sup>, Aggeliki Roussou<sup>3</sup>, Alain Krafft<sup>1</sup> and Vincent Baeten<sup>1</sup>  
<sup>1</sup> Quality Department of Agro-food Products, Walloon Agricultural Research Centre (CRA-W), Chaussée de Namur, 24, B-5030 Gembloux (Belgium)  
<sup>2</sup> Central Science Laboratory (CSL), Sand Hutton, York, YO41 1LZ (United Kingdom)  
<sup>3</sup> Agricultural University of Athens (AUA), Iera Odos Str., 75, GR-118 55 Athens (Greece)

Interdisciplinary research projects such as Integrated Projects (IP) or Networks of Excellence (NoE) share lot of information and involve collaborative work amongst institutes from many countries with different experience. In the TRACE IP (Tracing the origin of food), the multidisciplinary nature (geochemistry, chemometrics, molecular biology, social sciences, information management), the international partnership (17 countries) and the large amount of information (14 Work packages involving over 250 persons from 50 research teams) that have to be managed, require specific tools to communicate between partners inside the project.

For the communication between the partners, as well as the conventional methods of communication (e.g. telephone, meetings, reports) there are now many new tools available to help the project coordinator and the researchers. These range from shared work web spaces and web content management, to web meetings and to project management tools. In the TRACE project, the intranet was implemented under the Microsoft Windows Share Point Services 2003 release 2.0 (<https://intranet.trace.eu.org>). A project management software, MS Enterprise Project Management Web Access 2003 and 2 web meeting tools, MSN messenger and Webex have been assessed as well.



Yesterday Tomorrow

### Meetings, phone conferences

- Annual meetings (1/year)
- Workpackage meetings (2-4/year/WP)
- Scientific committee meetings (2-3/year)
- Project management board meetings (4/year)



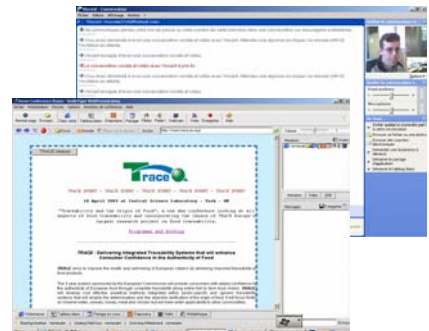
### Intranet <https://intranet.trace.eu.org>

- Announcements topic
- Events and meetings management
- Workspaces with collaborative work
- Documents libraries



### Web meetings

- Text mail exchange (chat)
- File transfer (FTP, mail)
- Document presentation
- Application sharing (interactive tool with remote control)
- White board sharing (interactive tool with remote control)



### Reports

- DOW – Description of work
- Implementation plan
- Annual reports
- Quarterly reports
- Deliverables reports



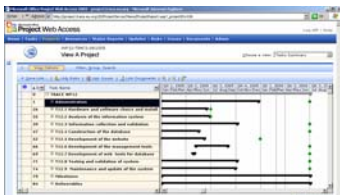
### Web content management

- News and events on-line
- Web-correspondents



### Project management

- Tasks, milestones, deliverables follow-up
- Gantt charts
- Resources and tasks management



### Acknowledgement

This work is funded by the European Commission, under the FP6 Food Quality and Safety Priority, within the framework of the Integrated Project TRACE – 006942 – entitled “Tracing Food Commodities in Europe”. This project is carried out by a consortium coordinated by the CSL – Central Science Laboratory (UK) and includes 50 partners.

### References

Vermeulen, P., Oger, R., van Raamsdonk, L., Monjoie, A.-S., Martinez, M., Baeten, V. & Dardenne, P. (2005). Development of the STRATFIED Internet-Oriented computer system (WP6). In: *Strategies and methods to detect and quantify mammalian tissues in feedingsuffs*. Dardenne, Pierre. Bruxelles, European Commission, 18p.

Vermeulen, P., Lofthouse, J., Brereton, P., Smith, J. & Baeten, V. (2006). *Information management and communication system inside the EU integrated project "TRACE": the intranet*. Proceedings in: TRACE 2nd annual meeting: Traceability and the consumer, Prague, 24-25/04/2006, 158.