

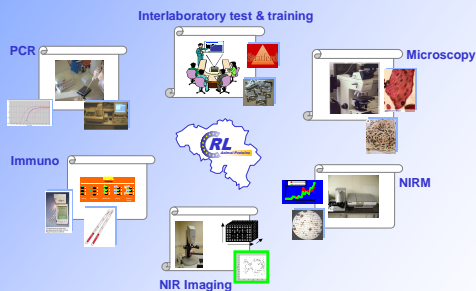
P. Veys, G. Berben and V. Baeten

Commission regulation No 776/2006 of 23 May 2006 has designated the Walloon Agricultural Research Centre (CRA-W) as the Community Reference Laboratory for animal proteins in feedingstuffs (CRL-AP) for the 2006-2011 period.



The mission of the CRL-AP is the following:

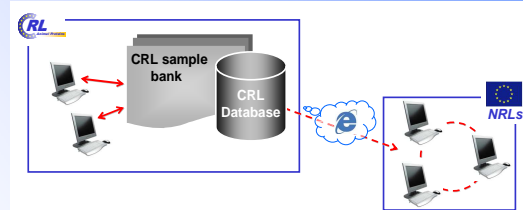
1. to provide scientific advice and support to the European Commission,
2. to coordinate the activities of the network of National Reference Laboratories (NRLs),
3. to organise ring trials, comparative testing and quality assistance for the NRLs,
4. to develop and/or validate new analytical methods and tools and to improve existing methods,
5. to organise training courses, formations and workshops.



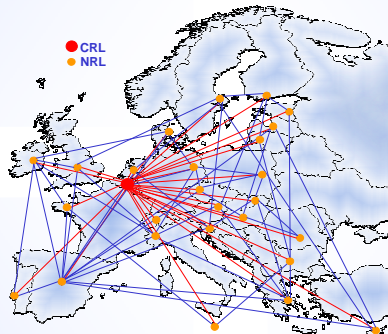
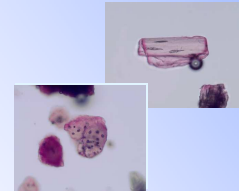
Domains of expertise of the CRL-AP (at CRA-W, Quality of Agricultural Products Department) within the scope of animal proteins detection.

CRL-AP provides a set of centralised services available to each NRL from the Member States.

1. Central repository of information
2. Coordinates of over 180 specialised scientists
3. Different experts working groups
4. Shared bibliography
5. Protocols library
6. Private and secured communication platform between all NRL and the CRL-AP



7. On-line micrographs collection (*in progress*)
8. Samples bank (all possible feed constituents)
9. Reference materials (*in progress*)



The world biggest network for PAP detection :

- 1 single centralised coordinating structure
- 27 countries on a joint effort
- Over 147 official control laboratories
- 2 interlaboratory studies a year
- Annual workshops and trainings

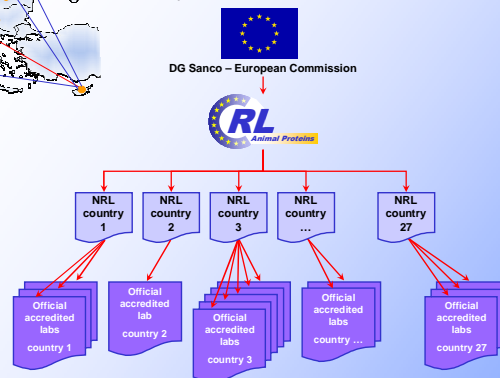
Cooperation with international research projects or groups:



through SAFEEDPAP collaboration with foreign countries



Pyramidal control structure



CRL-AP Team

Dr Vincent Baeten  
Dr Gilbert Berben  
Daniele Bonsignori  
Dr Pierre Dardenne  
Karin Doms  
Dr J. A. Fernández Pierna  
Ir Olivier Fumière  
Dr Georges Sinnaeve  
Ir Philippe Vermeylen  
Dr Pascal Veys

Director  
Deputy Director  
Computing and databases  
Head of Department  
Secretary  
Statistical analyses  
Molecular biology analyses  
Chemical analyses  
ICT Project leader  
Microscopy analyses & Secretary coordination

Legal references

- Commission Regulation (EC) N° 776/2006 of 23 May 2006 amending Annex VII to Regulation (EC) No 882/2004 of the European Parliament and of the Council as regards Community reference laboratories
- Commission Directive N° 2003/126/EC of 23 December 2003 on the analytical method for the determination of constituents of animal origin for the official control of feedingstuffs