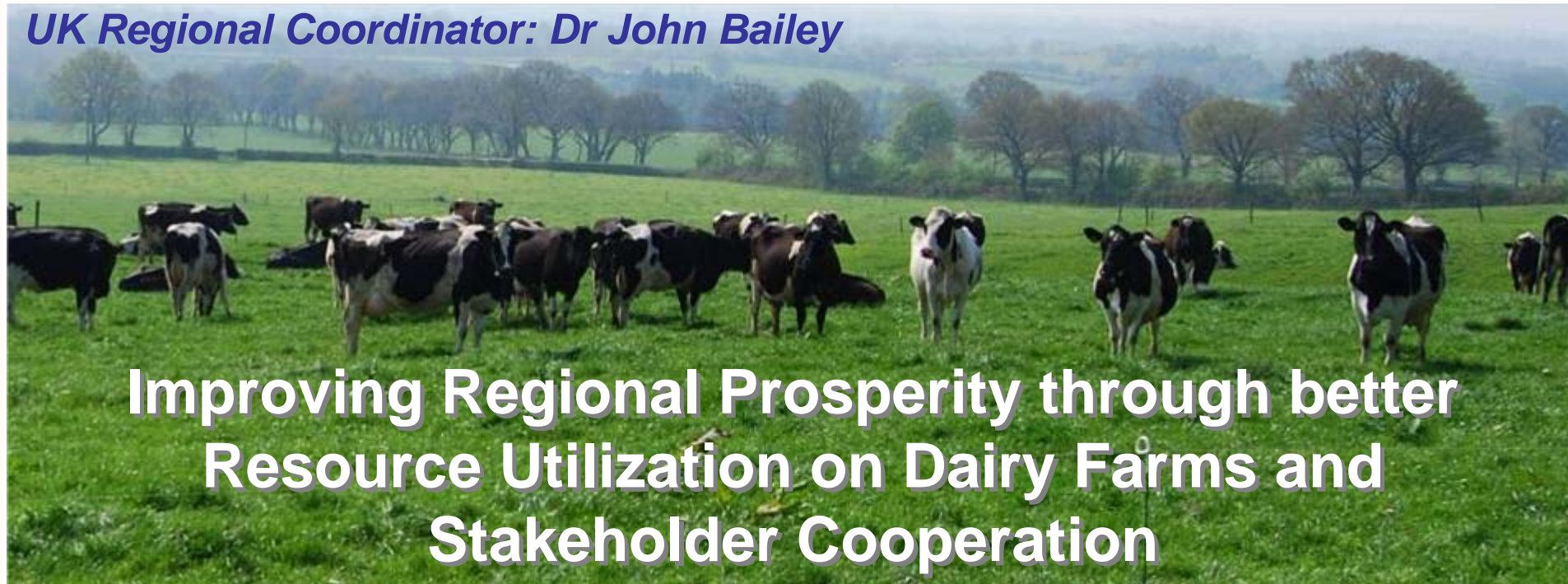




UK Regional Coordinator: Dr John Bailey



**Improving Regional Prosperity through better
Resource Utilization on Dairy Farms and
Stakeholder Cooperation**



www.interregdairyman.eu



PRESENTATION OUTLINE



- **Background to DAIRYMAN**
- **Project Overview**
- **Questions being Addressed in DAIRYMAN**

- **DAIRYMAN Stakeholders**
- **DAIRYMAN Networks and Linkages**

- **An Assessment of the Effectiveness of DAIRYMAN Linkages**



BACKGROUND TO DAIRYMAN

- Climatic conditions in North West (NW) Europe are good for dairy production, and extensive markets are close at hand
- Nutrient and GHG emissions, however, tend to be high, owing to suboptimal efficiencies in the use of fertilisers, feed and energy
- These inefficiencies are hindering the delivery of key environmental services, e.g. clean water, and threatening the ecological and economic sustainability of dairy farming



PROJECT OVERVIEW



- DAIRYMAN is an INTERREG project aimed at enhancing both the competitiveness and the ecological performance of dairy farming in NW Europe
- Its ultimate goal is to strengthen rural communities and regional economies

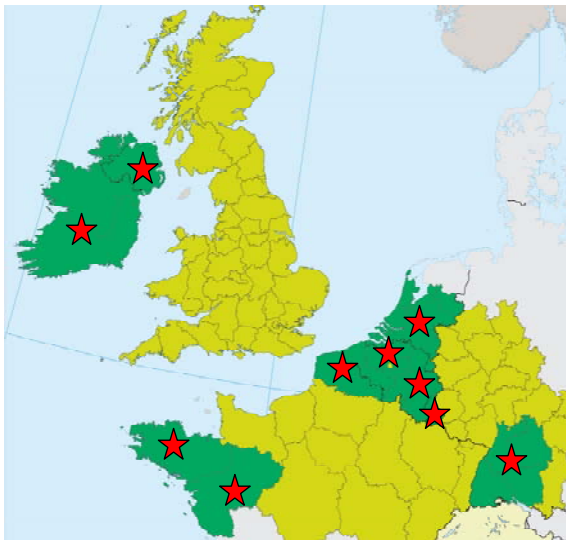


PROJECT OVERVIEW



DAIRYMAN
involves 14 Partner
Organizations

From 10 countries or
regions in NWE



Netherlands



Ireland



UK



France



Belgium



Germany



Luxembourg



1. Wageningen UR/ Wageningen University
2. Wageningen UR/Plant Research International
3. Wageningen UR/Livestock Research

4. Teagasc

5. Agri-Food and Biosciences Institute (AFBI);
*Sub-Partner: College of Agriculture, Food and
Rural Enterprise (CAFRE).*

6. Institut de l'Elevage
7. Chambre Régionale d'Agric' de Bretagne
8. Chambre Régionale d'Agric' des Pays de la Loire
9. Chambre Régionale d'Agric' du Nord Pas-de-Calais

10. Instituut voor Landbouw- en Visserijonderzoek
11. Provincie Antwerpen (Hooibeeekhoeve)
12. Centre Wallon de Recherches agronomiques

13. Landwirtschaftliches Zentrum für Rinderhaltung,
Grünlandwirtschaft, Milchwirtschaft, Wild und
Fischerei Baden-Württemberg“ (LAZBW)

14. Lycée Technique Agricole

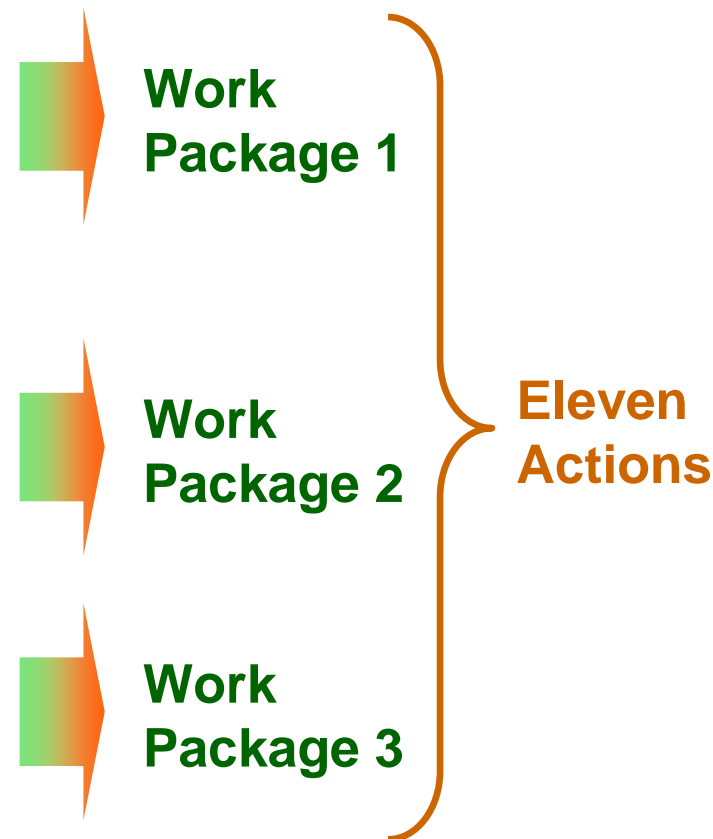
www.interregdairyman.eu





QUESTIONS BEING ADDRESSED

- How the ecological, economic and social performances of dairy sectors differ between regions, and how they might be improved via stakeholder cooperation?
- How dairy farm performances and on-farm management practices differ between regions, and how networking and use of innovative tools might lead to improvements?
- What are the most effective mechanisms for knowledge exchange between dairy industry stakeholders, e.g. researchers, farmers, advisors, and policy makers



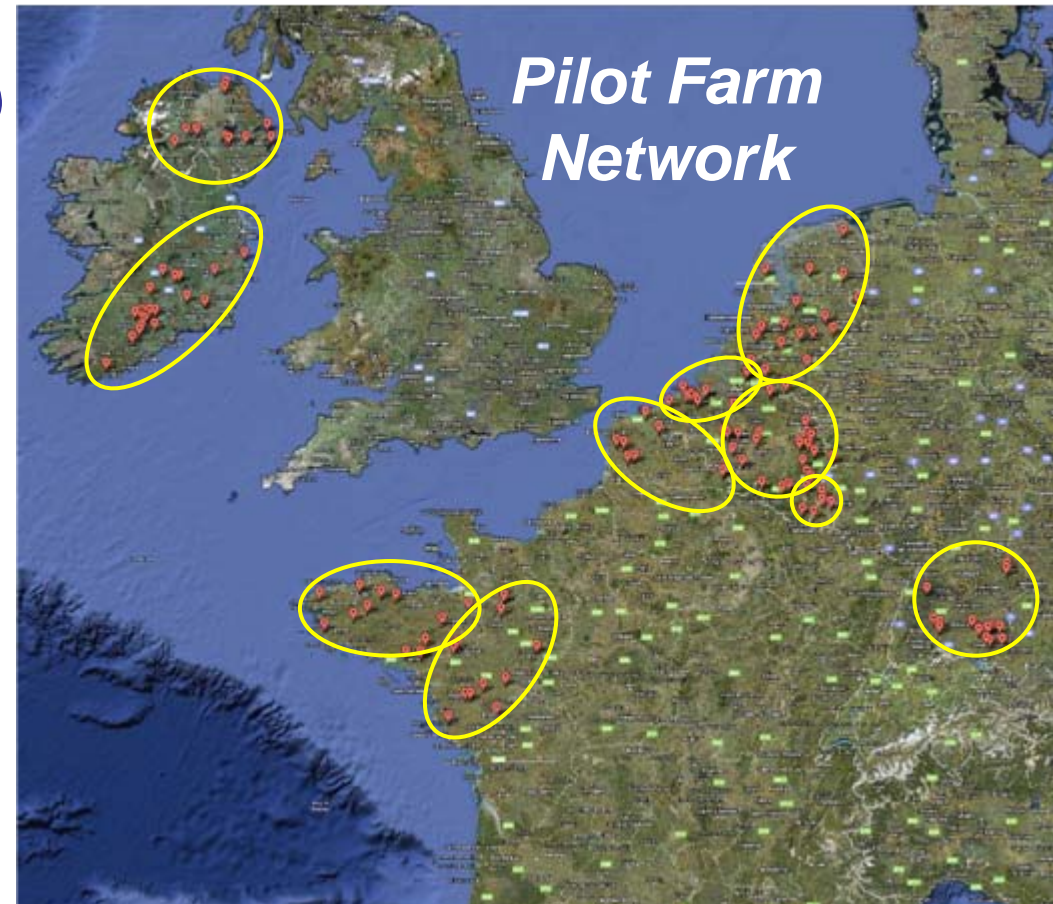


DAIRYMAN STAKEHOLDERS



Internal Stakeholders

- *Pilot dairy farmers (130)*
- *Advisors (50+)*
- *Researchers (50+)*
- *Students (100+)*





DAIRYMAN STAKEHOLDERS



Internal Stakeholders

- /// *Pilot dairy farmers (130)*
- /// *Advisors (50+)*
- /// *Researchers (50+)*
- /// *Students (100+)*

External Stakeholders

- /// Local dairy farmers
- /// Researchers
- /// Environmentalists
- /// Teachers
- /// Dairy Processors
- /// Policy Makers
- /// Politicians





DAIRYMAN NETWORKS & LINKAGES



PF Commercial Pilot
Dairy Farmer

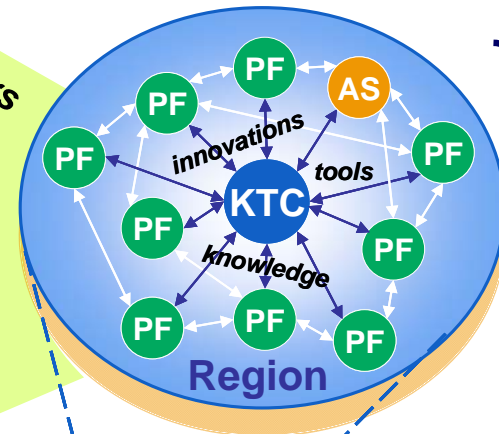
AS Agricultural
School

KTC Knowledge
Transfer Centre

Regional Zone of Influence

**Inter-regional
Zone of Influence**

Dairy Farmers
Farm Advisors
Researchers
Students/Teachers
Policy makers
Dairy Processors
Inhabitants



**Regional
Network**

EU Politicians
EU Legislators
EU Policy makers
EU-INTERREG
EU Projects
Researchers



**Inter-
regional
Network**

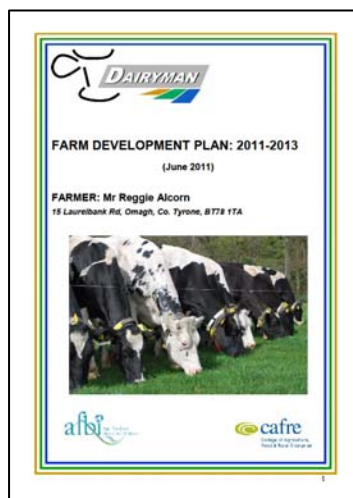


www.interregdairyman.eu

ASSESSMENT OF LINKAGES ETC



- **Pilot Farmer – Advisor – Researcher linkages, at regional and inter-regional levels, have been *HIGHLY EFFECTIVE* in DAIRYMAN**

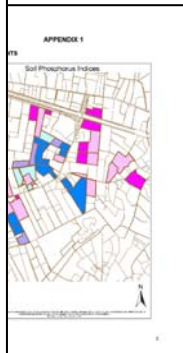


DEVELOPMENT PLAN (DP) OBJECTIVES:

Objective	Importance	Explanation
1	1	Ensuring farm sustainability in the present and future.
2	2	Ensuring farm sustainability in the present and future.
3	3	Ensuring farm sustainability in the present and future.
4	4	Ensuring farm sustainability in the present and future.
5	5	Ensuring farm sustainability in the present and future.

INDICATORS AND TARGETS TO ACHIEVE OBJECTIVES

Indicator	Unit	Actual value	Minimum value	Target value
1	1	1	1	1
2	2	2	2	2
3	3	3	3	3
4	4	4	4	4
5	5	5	5	5

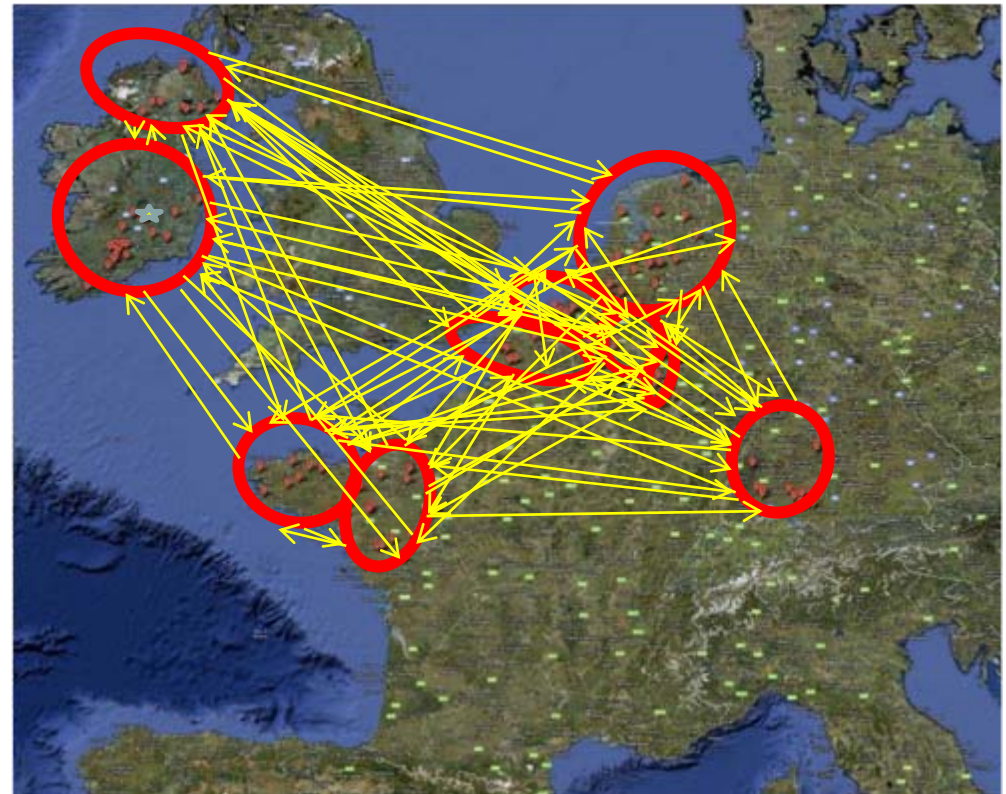




ASSESSMENT OF LINKAGES ETC



- Pilot Farmer – Advisor – Researcher linkages, at regional and inter-regional levels, have been **HIGHLY EFFECTIVE** in DAIRYMAN
- Researcher linkages across KTC's and Researcher – Student linkages at regional and interregional levels, have also been **PRODUCTIVE**



ASSESSMENT OF LINKAGES ETC



- Pilot Farmer – Advisor – Researcher linkages, at regional and inter-regional levels, have been **HIGHLY EFFECTIVE** in DAIRYMAN
- Researcher linkages across KTC's and Researcher – Student linkages at regional and interregional levels, have also been **PRODUCTIVE**
- Pilot Farmer – Advisor – Local Farmer linkages are **PROGRESSING** as results become available for dissemination at open days and local fairs etc



ASSESSMENT OF LINKAGES ETC



- Pilot Farmer – Advisor – Researcher linkages, at regional and inter-regional levels, have been **HIGHLY EFFECTIVE** in DAIRYMAN
- Researcher linkages across KTC's and Researcher – Student linkages at regional and interregional levels, have also been **PRODUCTIVE**
- Pilot Farmer – Advisor – Local Farmer linkages are **PROGRESSING** as results become available for dissemination at open days and local fairs etc
- Researcher - Dairy Processor - Policy Maker linkages **BEGINNING TO DEVELOP** as the project matures and outputs become available for discussion and debate





UK Regional Coordinator: Dr John Bailey



THANK YOU FOR LISTENING



www.interregdairyman.eu