

# Discrimination of botanical families using NIR Hyperspectral Imaging

Laura M. DALE<sup>1,2</sup>, Juan A. FERNÁNDEZ PIERNA<sup>3</sup>, Pierre DARDENNE<sup>3</sup>, André THEWIS<sup>1</sup>, Christelle BOUDRY<sup>1</sup>, Ioan ROTAR<sup>2</sup>, Florin S. PĂCURAR<sup>2</sup>, Vincent BAETEN<sup>3</sup>

<sup>1</sup>Animal Science Unit, Gembloux Agro-Bio Tech, University of Liège, Belgium,

<sup>2</sup>Plant Crops Department, University of Agricultural Science and Veterinary Medicine Cluj, Romania,

<sup>3</sup>Walloon Agricultural Research Centre (CRA-W), Valorisation of Agricultural Products Department, Henseval building - 24, Chaussée de Namur - 5030 Gembloux, Belgium

## Introduction

NIR Hyperspectral Imaging system (NIR-HSI) can be successfully used in grassland studies at a large scale, but this system is not yet developed for species discrimination on dried and milled samples. The NIR-HSI can be used for discrimination of botanical families, plant species and detection of toxic or/and invasive plants from mixed meadows.

## Aim of the study

To discriminate at laboratory scale, using a NIR Hyperspectral imaging (HSI), different botanical families (Poaceae and Fabaceae families).

## Material and Methods

### POA

- *Agrostis capillaries* L
- *Anthoxanthum odoratum* L
- *Briza media* L
- *Cynosurus cristatus* L
- *Festuca pratensis* L
- *Festuca rubra* L
- *Trisetum flavescens* L
- *Nardus stricta* L
- *Deschampsia flexuosa* L



### FABA

- *Lathyrus pratensis* L
- *Lotus corniculatus* L
- *Trifolium montanum* L
- *Trifolium pratense* L
- *Trifolium repens* L

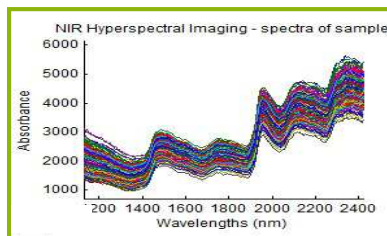
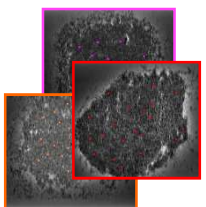
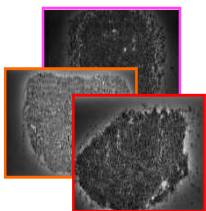


### NIR-HSI System

Wavelength range: 1100-2400 nm

### Image acquisition and analysis

HyperSee program was used for images acquisition.



## Preliminary results

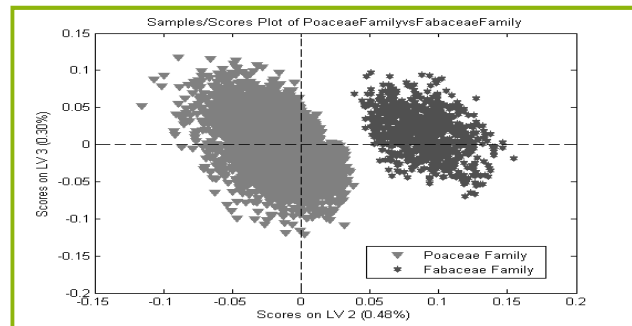
### Calibration model

500 spectra (1st and 3rd repetition images)

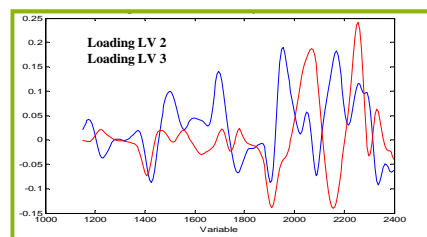
### Independent validation set

250 spectra (2<sup>nd</sup> repetition images)

After first derivative (window=11, polynomial=2) preprocessing the PLS-DA algorithm was used. With 10 latent variables, a high correlation **R<sup>2</sup>=0.88** and a low error **RSECV=0.135** were obtained and significantly assessed (P < 0.05).



After loading exploration the components which made the difference are:



### POA

- Protein (-)
- Cellulose (+)
- Starch (+)

### FABA

- Protein (+)
- Cellulose (-)

## Conclusions

This preliminary study indicated that this technique can be very useful for determining the floristic composition of hays harvested from grazing lands and it could probably be extended to the detection of invasive and toxic plants. This technique is original regarding the plants discrimination and sample preparation. The method has been applied to hay meadows but could be extended to any other kind of forages.

## Acknowledgements

The authors acknowledge Gembloux Agro-Bio Tech, ULg, Belgium and USAMV Cluj Napoca, Romania for their financial support and the CRA-W Gembloux, Belgium, for scientific support and advice.